

Cloze Generator

Last updated on Nov. 1, 2008

Kenji Kitao (Doshisha University)

kkitao@mail.doshisha.ac.jp

Kenichi Kamiya (Osaka Institute of Technology)

kamiya@ip.oit.ac.jp

Overview

Cloze Generator (CG) makes cloze exercises from (i.e., insert blanks in) English passages you provide, which can then be used for a test or an exercise. *And remember, it's FREE!*

You can make blanks for every n-th word automatically, or make blanks of specific words manually. You can also specify the vocabulary difficulty levels for blanks based on JACET 8000 (8 levels) or make blanks of specified parts of speech using online tree tagger.

CG makes blanks in the passage, provides word choice, i.e. the list of deleted words in random order, and provides the correct answers on the bottom of the page in the order of the blanks.

You can also export an html file compatible with *anaume.js*, a web-based e-learning exercises program script provided by the presenters.

Download Software

Cloze Generator for **Windows XP/Vista(Zipped)**

Cloze Generator for **Windows XP/Vista(Installer)**

Cloze Generator for **Mac OS X**

Script and Style Sheet file for E-learning*

<http://www.oit.ac.jp/ip/~kamiya/mwb/mwb.html> (top page)

http://www.oit.ac.jp/ip/~kamiya/mwb/mwb_tool_081101_win.zip

http://www.oit.ac.jp/ip/~kamiya/mwb/mwb_tool_081101_win.exe

http://www.oit.ac.jp/ip/~kamiya/mwb/mwb_tool_081101_mac.zip

<http://www.oit.ac.jp/ip/~kamiya/mwb/anaume.js>

<http://www.oit.ac.jp/ip/~kamiya/mwb/main.css>

* These two files need to be uploaded together with an exported html file you made. To see how it works, visit

<http://kkitao.e-learning-server.com/javaS/blank/cloze/index.html>

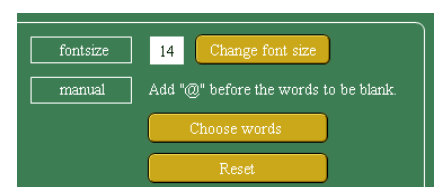
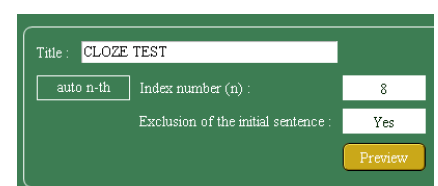
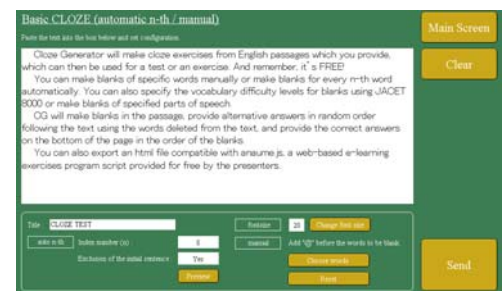
(When you use the installer for Windows, these files are automatically installed in your Program Files Folder.)

How to Use Cloze Generator

This software is largely self-explanatory. Download and extract the zip file. To start CG, open mwb_tools.exe (or mwb_tools.app on Mac OS X). When you use the installer, a shortcut icon to start the program appears on your desktop.

Ordinary procedures to make blanks

1. On the main screen, click "Basic Cloze automatic n-th / manual"
2. Copy and paste your passage into the box.
 - A. For making each n-th word blank automatically, set configuration in the **auto n-th** section. (lower left)
 - a. Specify Index number (n), for example, 6 or 7. The default is 8.
 - b. You can choose whether you make blanks in the first sentence or not.
 - c. Click "Preview" to see what the cloze looks like. Words to be deleted are shown with @.

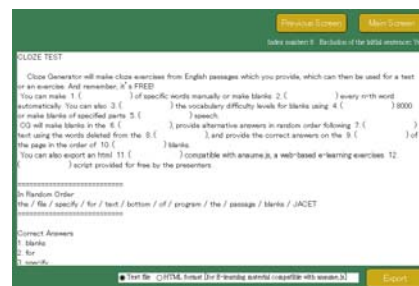


B. For making blanks manually with the specific words you want, set configuration in the **manual** section. (lower right)

- To enlarge the font size, so as to work adding @ efficiently, select the size and click the next “Change font size” button.
- Add @ without any space in front of the words you want to make blanks.*
- You can also specify a certain word, which will be replaced by blanks throughout the passage. Click “Choose words.”
- To erase all the @ from the passage, click “Reset.”

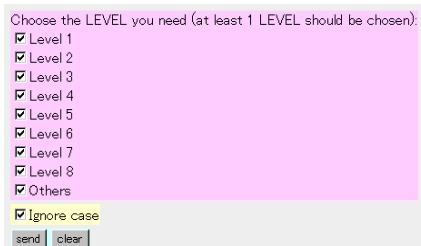
C. Click “Send.” The result is shown on another window shortly.

D. Choose “Text file” or “HTML format.” To get the file, click “Export” and save it with the extension of “.txt” or “.html”



Considering vocabulary difficulty levels

- On the main screen, click “Cloze Vocabulary level.”
- Copy and paste your passage into the box. Check all levels (level 1 to level 8) and click “send” below the box.
- After a few-second processing, click one of “Import the result.”



D. Choose “Low Level Threshold” (to indicate the lowest level you want) and “High Level Threshold” (to indicate the highest level you want) and the Index number (n).

E. Click “Send.”



Considering parts of speech

- On the main screen, click “Cloze Part of Speech.”
- Copy and paste your passage into the box, then click “Submit.”
- After a few-second processing, click “Import the result.”



D. Choose POS and click “Generate POS Tag List.” The tags of chosen POS are shown in the box below.

E. Specify Index number (n) and click “Send.”

* In languages which do not have spaces between words, such as Japanese, you need to put a space before @ in front of the parts you want to make a blank, and a space right after the parts.